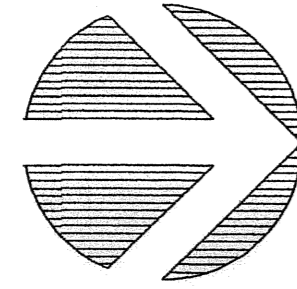




SURVEYING & MAPPING
Certificate of Authorization No. LB7264
Prepared by: Jeff S. Hodapp, P.S.M.
951 Broken Sound Parkway, Suite 320
Boca Raton, Florida 33487
Tel: (561) 241-9988
Fax: (561) 241-5182

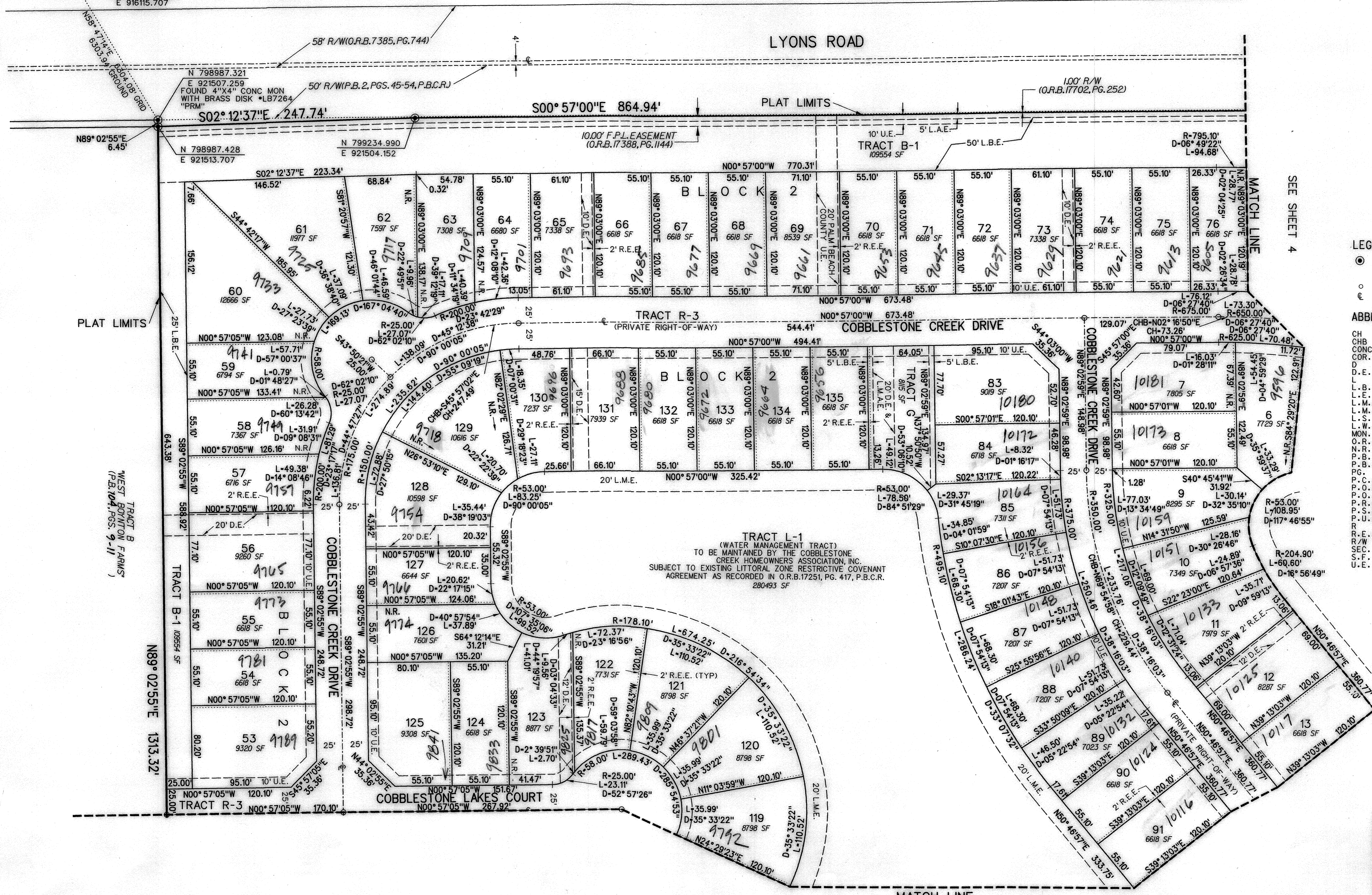


GRAPHIC SCALE
1"=50'

FOUND WEST ONE-QUARTER
CORNER SECTION 30-45-42
PALM BEACH COUNTY
BRASS DISK IN CONC. MON.
N 795720.429
E 916115.707

COUNTRYSIDE MEADOWS

PETITION NO. 2003-035 (COUNTRYSIDE MEADOWS AGR-PDD)
A REPLAT OF TRACT A OF WEST BOYNTON FARMS PLAT (P.B. 104, PGS. 9 - 11, P.B.C.R.)
IN SECTION 20, TOWNSHIP 45 SOUTH, RANGE 42 EAST,
PALM BEACH COUNTY, FLORIDA.
NOVEMBER, 2004



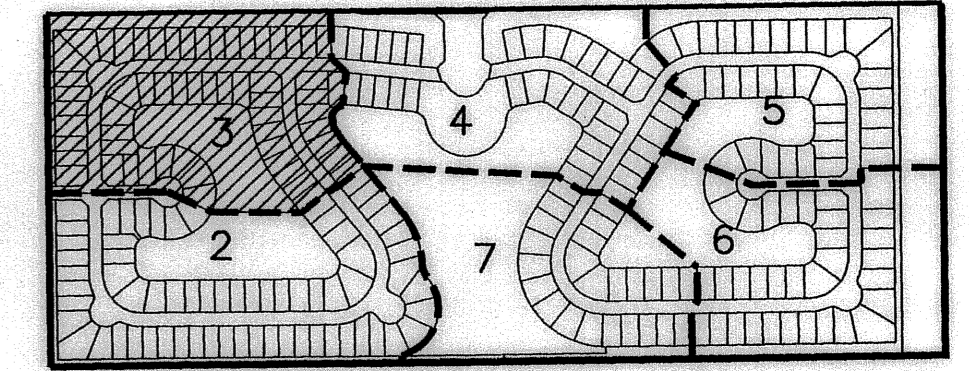
LEGEND:

- SET P.R.M. (UNLESS OTHERWISE NOTED)-4" X4" CONC. MON. WITH ALUMINUM DISK STAMPED P.R.M. #LB7264
- P.C.P. CENTERLINE

ABBREVIATIONS:

- CH CHORD BEARING
- CONC. CONCRETE
- COR. CORNER
- D.E. DELTA (CENTRAL ANGLE)
- DRAIN. DRAINAGE EASEMENT
- ARL. ARLENGTH
- L.B. LICENSED BUSINESS
- L.E. LANDSCAPE EASEMENT
- L.M.E. LAKE MAINTENANCE EASEMENT
- L.M.A.E. LAKE MAINTENANCE ACCESS EASEMENT
- L.S. LICENSED SURVEYOR
- L.W.D.D. LAKE WORTH DRAINAGE DISTRICT
- MON. MONUMENT
- O.R.B. OFFICIAL RECORDS BOOK
- N.R. NON-RADIAL
- PLAT BOOK PLAT BOOK
- P.B.C.R. PALM BEACH COUNTY RECORDS
- PG. PAGE
- P.C.P. PERMANENT CONTROL POINT
- P.O.B. POINT OF BEGINNING
- P.O.C. POINT OF COMMENCEMENT
- P.R.M. PERMANENT REFERENCE MONUMENT
- P.S.M. PROFESSIONAL SURVEYOR & MAPPER
- P.U.D. PLANNED UNIT DEVELOPMENT
- R. RADII
- R.E.E. ROOF ENCROACHMENT EASEMENT
- R/W. RIGHT-OF-WAY
- SEC. SECTION
- S.F. SQUARE FEET
- U.E. UTILITY EASEMENT

SUBDIVISION: Countryside Meadows
BOOK: 014
PAGE: 014
FLOOD MAP #: 1254
ZONING: PDD
QUAD #: 50
SE
TAZ: 745
SUBNAME: West Boynton Farms



KEY MAP
NOT TO SCALE

SEE SHEET 2